

Parents' Newsletter

Love, Respect, Honesty, Perseverance



Friday 18th October

Dear Parents,

This week's newsletter is dedicated to sharing information about attendance. We hope the information shared here and by the local authority (via their website) will support parents in understanding the consistent approach to absence now being applied nationally.

Due to both the importance of this information and the considerable changes applied, and the need for all parents and carers to have a clear understanding of the implications for them as parents, we are only sending this information and the diary dates for parents this week.

Should you have any questions please do ask a member of the school team, whilst being aware this is new to all of us too. We are dedicating a Trustee to support the roll out of the system and securing additional administration hours to ensure the time needed to support parents in navigating it are in place.

We are confident that parents/guardians will be keen to work with the school to ensure that pupils maintain good attendance since it is clear that this will have a positive effect on their learning. Your help and support in this matter is much appreciated.

Kind regards

Bridgette Gough

Right From the Start – The Importance of Good Attendance in the Primary Years

Good attendance in school is essential for a child's education. The Government has brought in new guidance to ensure that attendance policies are consistent across the country. The new policy is now on our website (in the policies section). The link below clearly outlines the expectations on parents and carers, the school and Trust.

<https://www.essex.gov.uk/schools-and-learning/schools/school-attendance-and-absence>

Unsurprisingly, research shows that there is a direct link between school attendance and attainment and progress. Poor attendance and missing lessons has a direct negative impact upon a child's success in learning. Missing out on lessons leaves children vulnerable to falling behind. Children with poor attendance tend to achieve less in both primary and secondary school. But the impact seen is not purely academic but social too. Children find it more difficult to establish strong friendships with poor attendance. It also makes it difficult to build close relationships with our staff team, enabling them to have more resilience and generally be happier in school.

We aim to support and enable our pupils to fulfil their potential and provide them with every opportunity to flourish academically and socially in school; our mission being for our pupils to love life and learning, now and in the future. Supporting our parents and carers is an essential ingredient of our role as a school community. Preventing lateness and avoiding scheduled medical/dental appointments during the school day are examples of where your support can have a direct impact on your child's learning opportunities.

Minor ailments, such as slight headaches or colds, need not mean your child has to miss precious time in school. We can support "giving the day, or session a go" and support the taking of medication that supports them feeling a little better if that's what is needed. Repeated absences may require the school to request that you obtain medical evidence from your doctor's surgery or local pharmacy as recommended by the Government.

Headteacher's Cup

Tiger Cub Class:	W1- Arthur
	W2- Ezra
Reindeer Class:	W1- Flinn
	W2- Isla
Fennec Fox Class:	W1- Niya
	W2- Henry
Panda Class:	W1- Max
	W2- Ellis
Snow Leopard Class:	W1- Alexa
	W2- Emily
Turtle Class:	W1- Hero
	W2- Jessie
Seal Class:	W1- Arna
	W2- Maisy



Birthdays in October

Talia	Willow
Juliette	Myles
Jaxon	Chloe D
Harley S-B	Danniella
Joe C	
Layla	
Monty	
Rosie T	
Henry M	
Agnès	
Chloe M	



Going For Green

Sadie

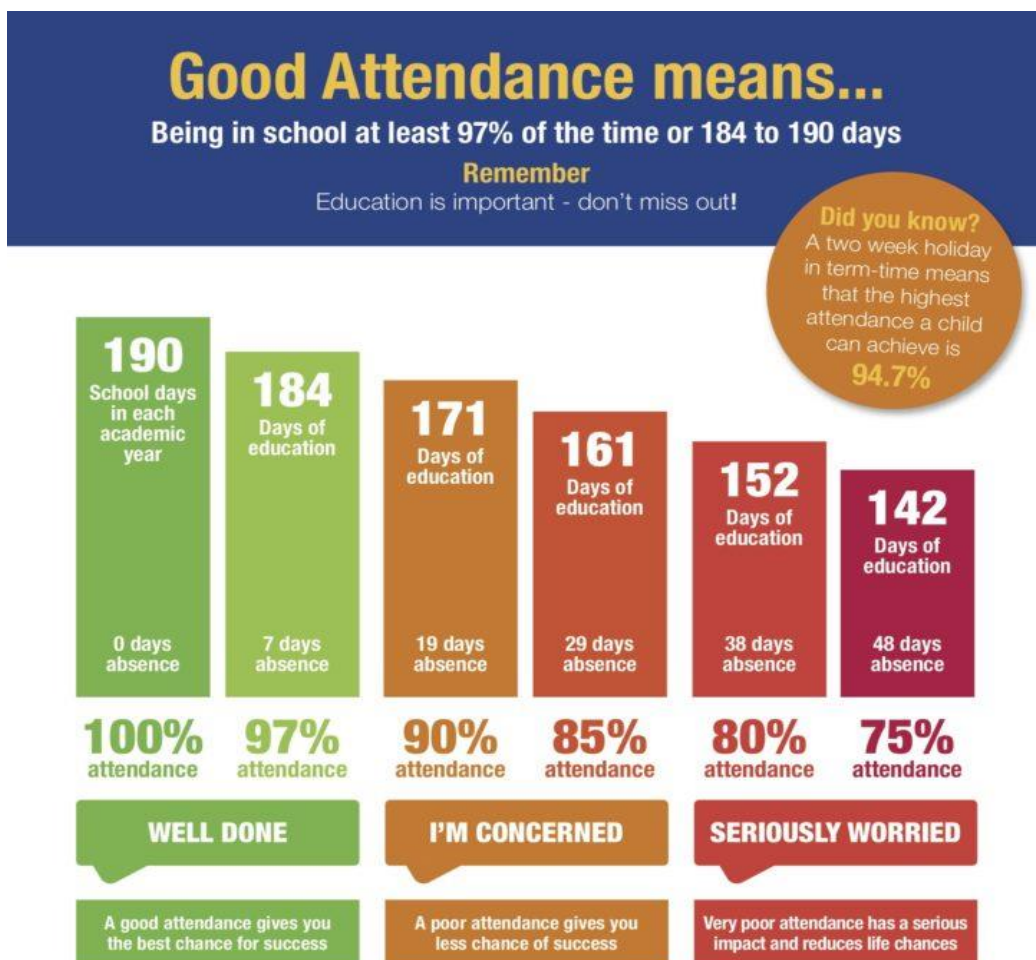
Sports Cup

Hero & Stanley

We would also remind parent/guardians that the law does not give any entitlement to parents to remove their child from school during term time for the purpose of a holiday. Headteachers may only grant leave of absence where an application has been made in advance and the Headteacher considers that there are exceptional circumstances relating to the application; it is extremely rare that the guidelines for these circumstances are met and where this is the case, it is likely to be as a one off.

The School's Office maintains a log of instances of absence and lateness and shares this with our Headteacher. We are also now required to share this with the Local Authority and Department of Education.

Where concerns arise, the Local Authority have provided model letters and structured meetings to support schools in working with parents to improve the situation for pupils and ensure they are in school. The pathway for actions, details of fining and other suggested actions as part of the national policy are outlined on this linked site. In addition, where we have no information about an absence, we may come to the home to ensure nothing untoward has happened to prevent contact with the school.



Did you know?
When pupils attend school they:

- Can achieve their full potential
- Have better career prospects
- Learn how to look after themselves and be healthy
- Grow in confidence
- Keep up with work and homework
- Make new friends

There are

365 DAYS

in a calendar year

175 DAYS

are **NOT** spent at school